

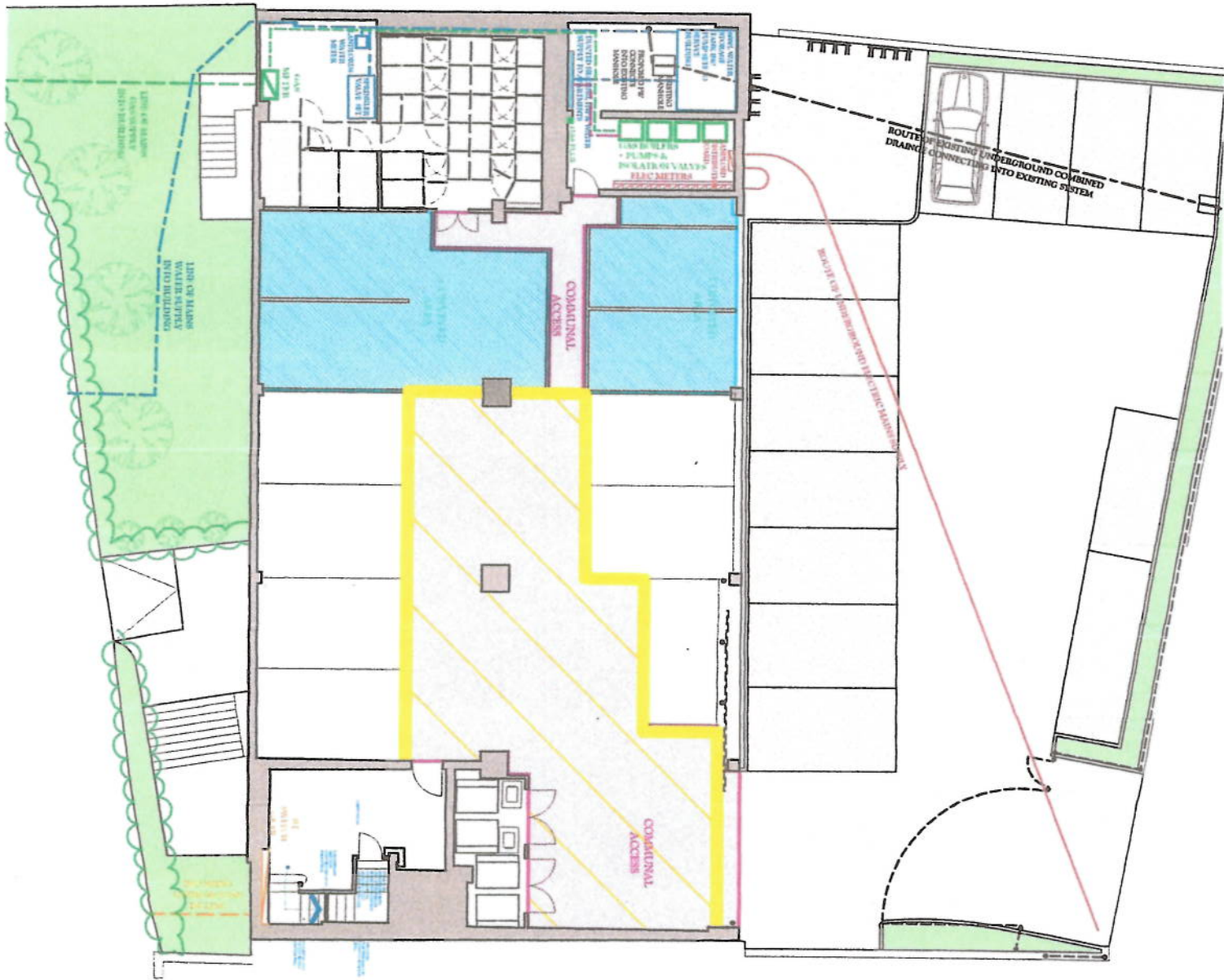
CIRCULATED AT MEETING
AGENDA ITEM 4C) HILARY HOUSE, ST SAVIOUR'S
PLACE

City of York Council Planning Sub-Committee
Hilary House, now Biba House, YO1 7PJ
9th June 2016

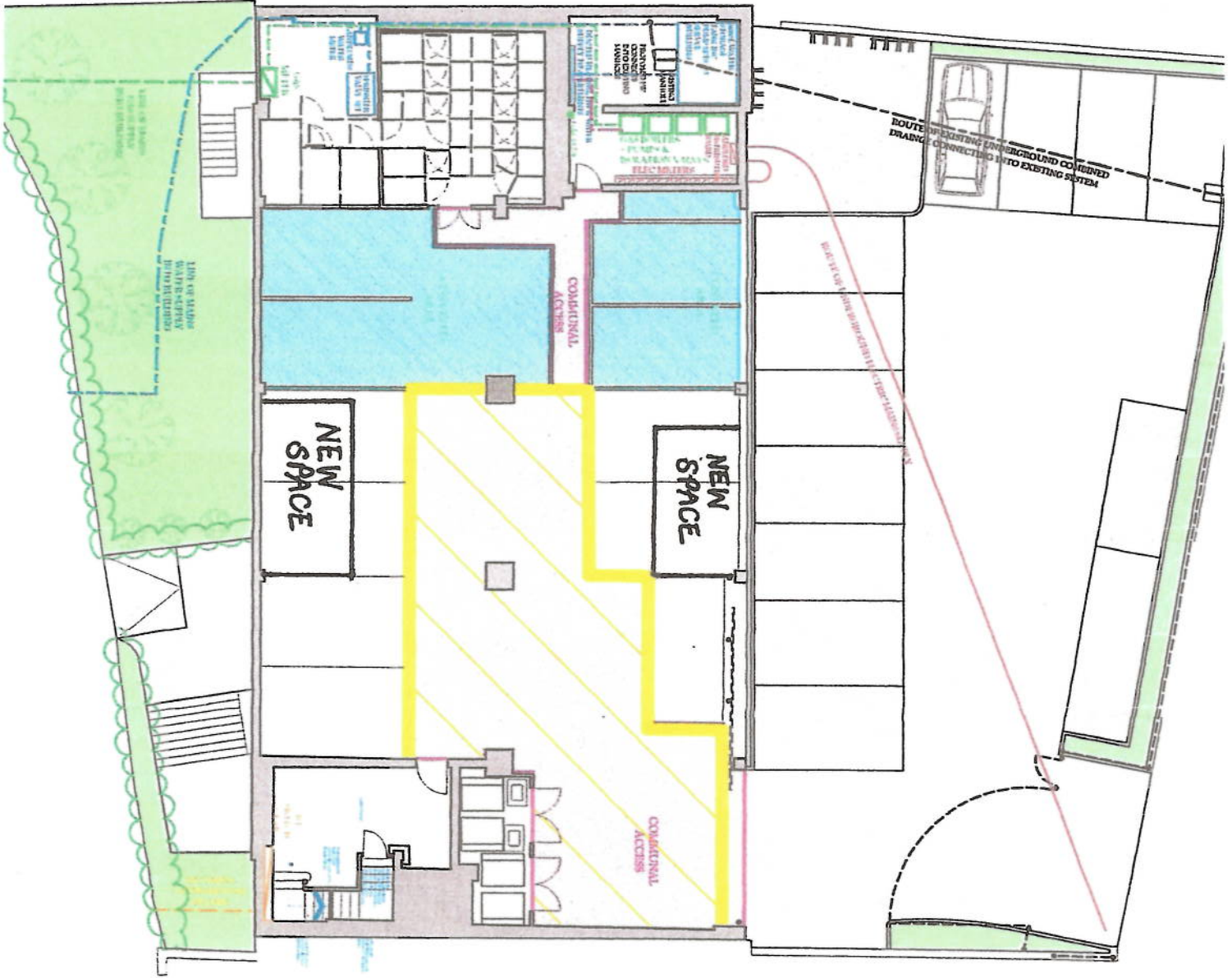
The attached Plan A shows 13 spaces outside the building and 11 in the basement. We have no issue with the outside parking. However, inside the building there is not room for 11 usable spaces, only 9 - the lines on the ground are entirely misleading.

There are 4 flats unsold in the development and at least one which is sold but not let. Therefore none of the parking allocated to these flats is in use, and most of the basement parking is unoccupied. Once these flats are sold, however, and the car park is full, it will be physically impossible to access the four far end spaces and extremely difficult to park in the remaining spaces.

Plan B shows an alternative layout which would create real spaces as opposed to fictitious ones. However, this does mean reducing the number of indoor spaces to 9 and would leave no available space for allocation to the proposed penthouse. If the Applicant has indicated that there is parking available, this is not true.



PLAN "A"



PLAN "B"